

Safeguarding Children & Families Monthly Performance Report

As at Month End: May 2015

Document Details

Status: Issue 1

Date Created: 09/07/2015

Created by: Deborah Johnson, Performance Assurance Manager - Social Care

Contact: Ext. 22666 / deborah.johnson@rotherham.gov.uk

Performance Summary

As at Month End: May 2015

	NO.	INDICATOR	TARGET	GOOD PERFORM IS	DATA NOTE (Monthly)	2014/15	2015/16		Year to Date 15/16		DOT (Month on Month)	RAG	YR ON YR TREND		LATEST BENCHMARKING - 2013/14			
						Mar-15	Apr-15	CURRENT May-15	YTD	DATA NOTE			2013/14	2014/15	STAT NEIGH AVE	BEST STAT NEIGH	NAT AVE	NAT TOP Q TILE THRESHOL D
LOOKED AFTER CHILDREN	7.1	Number of Looked After Children	n/a	Info	Count	407	409	406		As at	↓	n/a		407				
	7.2	Rate of Looked After Children per 10,000 population aged under 18	n/a	Info	Rate per 10,000	72.5	72.9	72.4		As at	↓	n/a	70	70	73.5	46.0	60.0	-
	7.3	Admissions of Looked After Children			Count	12	17	22	39	Financial Year	↑	n/a	147	175				
	7.4	Number of children who have ceased to be Looked After Children			Count	11	19	17	36	Financial Year	↓	n/a	136	160				
	7.5	Number & Percentage of LAC who have ceased to be looked after due to permanence (Special Guardianship Order, Residence Order, Adoption)		High	Percentage	4 36.36%	7 36.8%	6 35.3%	13 36.1%	Financial Year	↓	n/a	55 40.44%	60 37.50%				
	7.6	LAC cases reviewed within timescales	98%	High	Percentage	98.4%	94.8%	90.0%	92.5%	Financial Year	↓		98.6%	94.9%				
	7.7	Percentage of children adopted			Percentage	36.4%	42.9%	TBC (Unavailable)		As at	↓	n/a	26.5%	26.3%	22.7%	32.0%	17.0%	21.0%
	7.8	Health of Looked After Children - up to date Health Assessments	88%	High	Percentage	81.4%	85.7%	80.8%		As at	↓		82.7%	81.4%				
	7.9	Health of Looked After Children - up to date Dental Assessments	84%	High	Percentage	58.8%	67.6%	59.9%		As at	↓		42.5%	58.8%				
	7.10	% of LAC with up to date PEPs	90%	High	Percentage	71.4%	66.1%	59.6%		As at	↓		72.9%	71.4%				
	7.1	% of eligible LAC with an up to date plan	80%	High	Percentage	98.8%	94.1%	94.3%		As At	↑		67.0%	98.8%				
	7.1	% LAC visits up to date - National Minimum standard		High	Percentage	94.9%	98.6%	95.2%		As at	↑	n/a		94.9%				
	7.1	% LAC visits up to date - Rotherham standard		High	Percentage	64.0%	73.0%	79.0%		As at	↑	n/a		64.0%				
CARE LEAVERS	8.1	Number of care leavers	n/a	Info	Count	183	189	200		As at	↑	n/a		183				
	8.2	% of eligible LAC with an up to date pathway plan	98%	High	Percentage	69.8%	77.6%	85.2%		As at	↑			69.8%				
	8.3	% of care leavers in suitable accommodation	95%	High	Percentage	97.8%	97.0%	98.5%		As at	↑		96.3%	97.8%	74.2%	100.0%	77.8%	90.0%
	8.4	% of care leavers in employment, education or training	65%	High	Percentage	71.0%	72.5%	74.5%		As at	↑		52.3%	71.0%	40.8%	65.0%	45.0%	55.8%
PLACEMENTS	9.1	% of long term LAC in placements which have been stable for at least 2 years	70%	High	Percentage	71.9%	71.7%	71.1%		As at	↓		68.8%	71.9%	67.6%	79.0%	67.0%	71.1%
	9.2	% of LAC who have had 3 or more placements - rolling 12 months	10%	Low	Percentage	12.0%	10.5%	10.5%		As at	→		11.2%	12.0%	9.6%	7.0%	11.0%	9.0%
ADOPTIONS	10	% of adoptions completed within 12 months of SHOBPA		High	Percentage	100.0%	100.0%	50.0%	75.0%	As at	→	n/a	55.6%	84.6%				
	10	Average number of days between a child becoming Looked After and having a adoption placement (A1)	487	Low	Average count	200.3	360.5	566.0	463.3	As at	↓		661	417.5	507.3	328.0	525.0	468.0
	10	Average number of days between a placement order and being matched with an adoptive family (A2)	121	Low	Average count	71.0	74.2	295.0	184.8	As at	↓		315	177.3	217.1	45.0	217.0	163.0

PLANS - IN DATE

DEFINITION

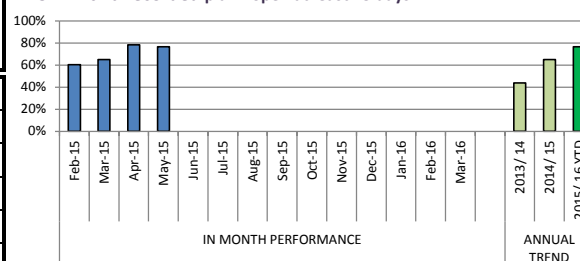
A child's plan is to be developed for an individual child if they have a "wellbeing need" that requires a targeted intervention. Each type of plan has a completion target. When a Looked After Child reaches 16 years and 3 months they become eligible for a 'Pathway Plan' - this plan focuses on preparing a young person for adulthood and their future (For example; future accommodation, post 16 Education/Training and Employment)

PERFORMANCE ANALYSIS

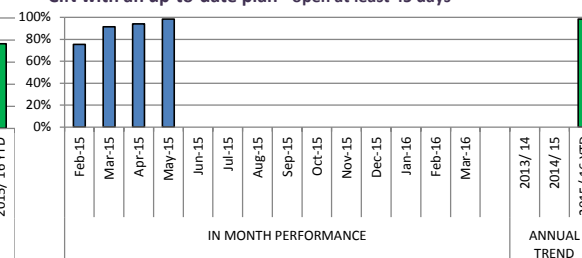
Child Protection Plans are now where they would be expected to be at 100%. There is still work to do in terms of CIN plans although the issue here is mostly to do with failure to update plans i.e. most CIN have a plan in place. As can be seen performance has improved considerably in this regard with 98.3% of children who have been assessed as being in need now having a plan. Performance in relation to Plans for Looked After Children remains above 90%, the weekly performance meeting identifies each child without an up to date plan and there is a requirement that this is followed up by the responsible manager. Absence of an up to date LAC plan in almost all cases has been due to the presence of an alternative plan - for example the child has had a pathway plan put in place as they have reached age 16 years and 3 months or because the correct process has not been followed on the IT system to link the document to the section where data is extracted. The 22% without an up to date pathway plan relates to 9 individuals(at time of writing) these are individuals who have recently triggered the need for a plan.

		CIN with a recorded plan (open at least 45 days)	CIN with an up to-date plan (open at least 45 days)	CPP with an up to date plan	LAC with an up to date plan	Eligible LAC with an up to date pathway plan
IN MONTH PERFORMANCE	Feb-15	75.4%	60.3%	97.8%	92.9%	67.2%
	Mar-15	91.4%	65.1%	97.6%	98.8%	69.8%
	Apr-15	94.1%	78.3%	97.0%	94.1%	77.6%
	May-15	98.3%	76.5%	100.0%	94.3%	78.0%
	Jun-15					
	Jul-15					
	Aug-15					
	Sep-15					
	Oct-15					
	Nov-15					
	Dec-15					
	Jan-16					
	Feb-16					
	Mar-16					
ANNUAL TREND	2013/ 14		43.8%		67.0%	
	2014/ 15		65.1%	97.6%	98.8%	69.8%
	2015/ 16 YTD	98.3%	76.5%	100.0%	94.3%	78.0%
LATEST BENCHMARKING	SN AVE					
	BEST SN					
	NAT AVE					
	NAT TOP Q TILE					

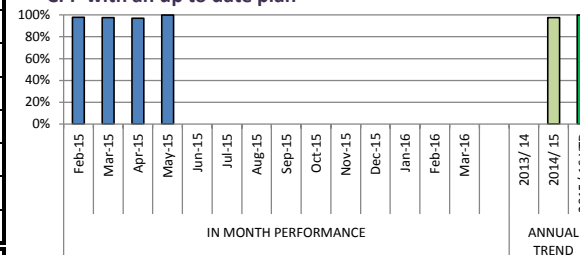
CIN with a recorded plan - open at least 45 days



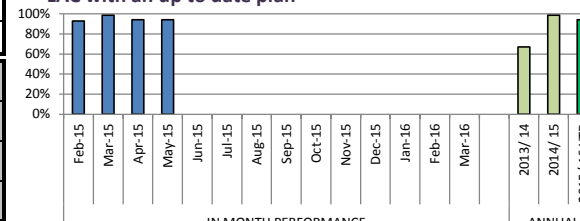
CIN with an up-to-date plan - open at least 45 days



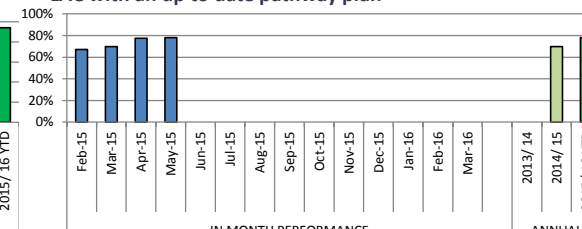
CPP with an up to date plan



LAC with an up to date plan



LAC with an up to date pathway plan



LOOKED AFTER CHILDREN

DEFINITION

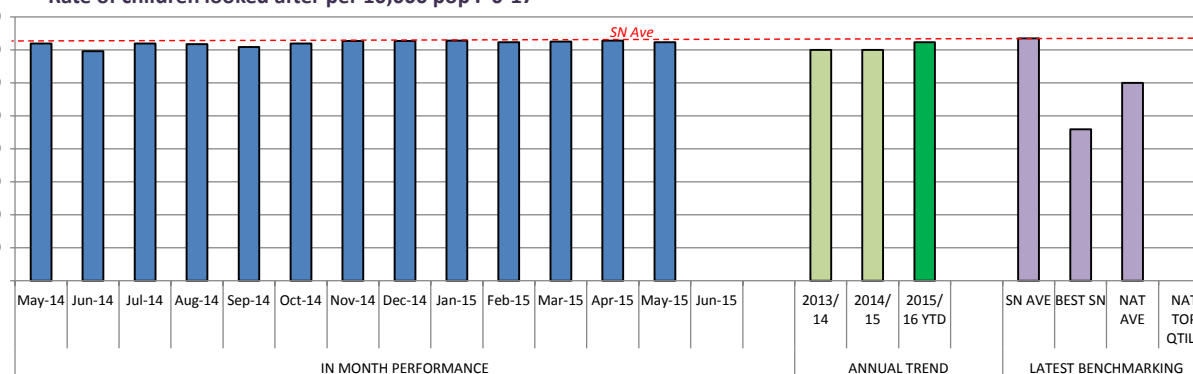
Children in care or looked after children are children who have become the responsibility of the local authority. This can happen voluntarily by parents struggling to cope or through an intervention by children's services because a child is at risk of significant harm.

PERFORMANCE ANALYSIS

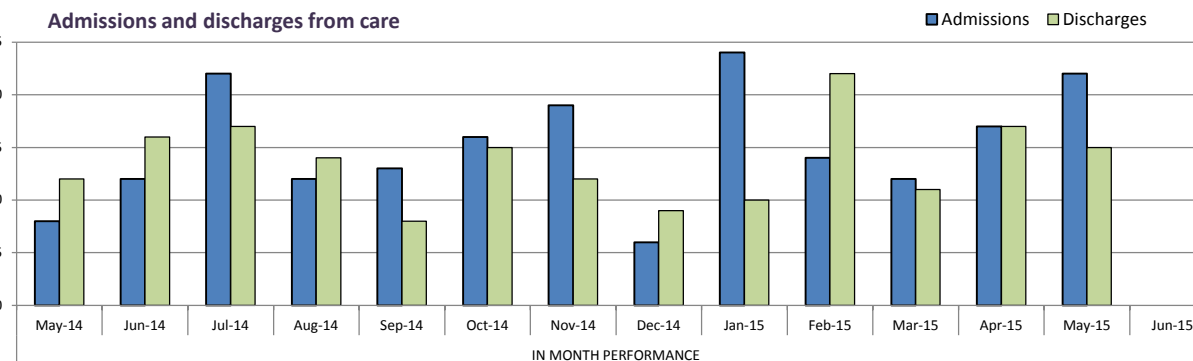
Although the numbers of LAC are in line with our statistical neighbours they are higher than the national average and best performing LAs. They are also rising. Early help arrangements need to be strengthened over time to prevent the need for children to come into care this is part of the departmental strategy. In the short term attention will be focussed on those children in care who could be secured permanence outside the care system for example through Special Guardianship Orders, Child Arrangement Orders and/or rehabilitation to family members. The number of children placed out of the Borough in independent placements is also high but the strategy to reduce usage is multi-faceted and some measures for example foster care recruitment have long lead in times.

		Rate of children looked after per 10K pop	Number of LAC	Admissions of children looked after	No. of children who have ceased to be LAC
IN MONTH PERFORMANCE	May-14	72.0	404	8	12
	Jun-14	69.7	391	12	16
	Jul-14	72.0	404	22	17
	Aug-14	71.8	403	12	14
	Sep-14	70.9	398	13	8
	Oct-14	72.0	404	16	15
	Nov-14	72.7	408	19	12
	Dec-14	72.7	408	6	9
	Jan-15	72.9	409	24	10
	Feb-15	72.4	406	14	22
	Mar-15	72.5	407	12	11
	Apr-15	72.9	409	17	17
	May-15	72.4	406	22	15
	Jun-15				
ANNUAL TREND	2013/ 14	70.0		147	136
	2014/ 15	70.0		175	160
	2015/ 16 YTD	72.4	406	39	32
LATEST BENCHMARKING	SN AVE	73.5			
	BEST SN	46.0			
	NAT AVE	60.0			
	NAT TOP QTILE	-			

Rate of children looked after per 10,000 pop . 0-17



Admissions and discharges from care



LOOKED AFTER CHILDREN - PLACEMENTS

DEFINITION

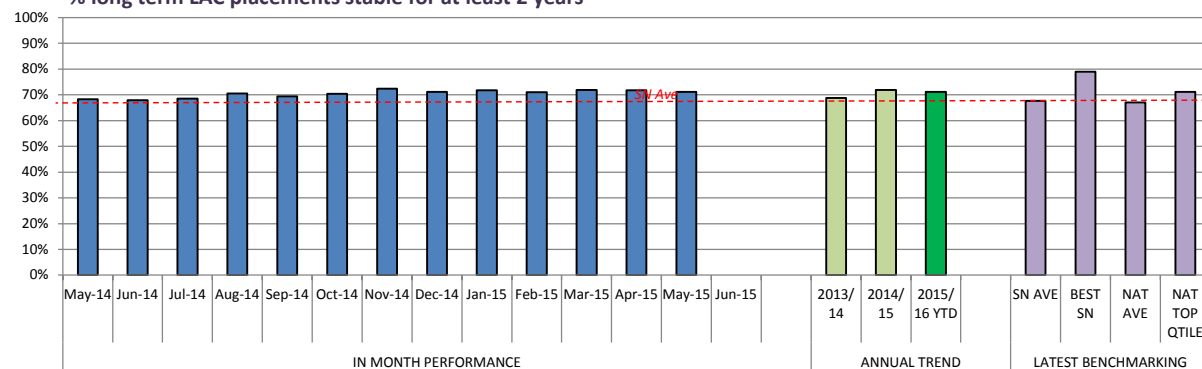
A LAC placement is where a child has become the responsibility of the local authority (LAC) and is placed with foster carers, in residential homes or with parents or other relatives.

PERFORMANCE ANALYSIS

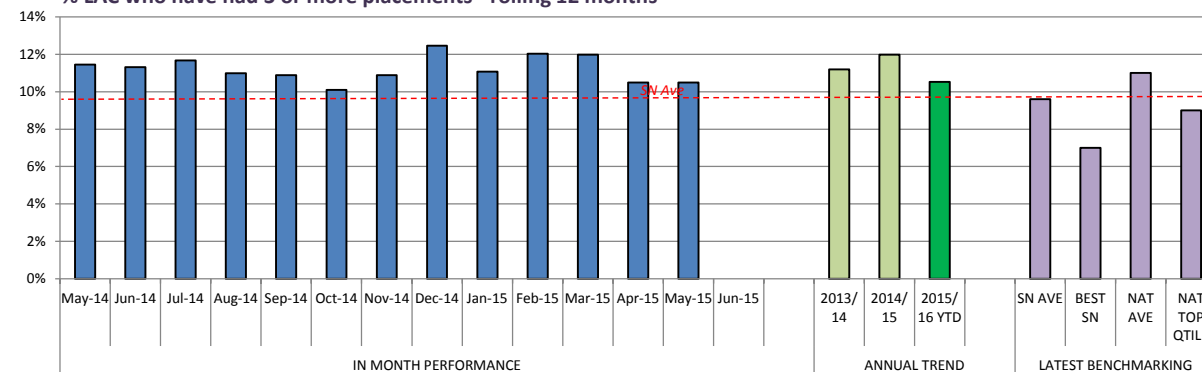
Performance in relation to LAC stability will be examined closely as part of our strategy to reduce the number of children in out of authority placements. We need to ensure that stability does not mask case drift and result in children remaining looked after longer than necessary. We are also aware that data quality related to recording missing episodes may impact on our the 3 or more moves stability indicator. Once this is corrected this indicator may deteriorate. Additionally we need to closely examine our balance of placements to ensure there is not over reliance on residential care for those children who would be better placed in a family setting. Every child in residential care will be reviewed by a senior manager over the coming months to ensure their care plans take account of their needs and consider whether it is possible and appropriate to plan for a move into a more appropriate family based setting.

		No. of long term LAC placements stable for at least 2 years	% long term LAC placements stable for at least 2 years	No. of LAC who have had 3 or more placements - rolling 12 months	% LAC who have had 3 or more placements - rolling 12 months
IN MONTH PERFORMANCE	May-14	110 of 161	68.3%	45 of 393	11.5%
	Jun-14	110 of 162	67.9%	44 of 389	11.3%
	Jul-14	113 of 165	68.5%	46 of 394	11.7%
	Aug-14	115 of 163	70.6%	43 of 391	11.0%
	Sep-14	113 of 163	69.3%	43 of 395	10.9%
	Oct-14	114 of 162	70.4%	40 of 396	10.1%
	Nov-14	115 of 159	72.3%	44 of 404	10.9%
	Dec-14	111 of 156	71.2%	50 of 401	12.5%
	Jan-15	109 of 152	71.7%	46 of 415	11.1%
	Feb-15	105 of 148	71.0%	49 of 407	12.0%
	Mar-15	110 of 153	71.9%	49 of 409	12.0%
	Apr-15	109 of 152	71.7%	43 of 410	10.5%
	May-15	106 of 149	71.1%	44 of 418	10.5%
	Jun-15				
ANNUAL TREND	2013/ 14	108 of 157	68.8%	44 of 393	11.2%
	2014/ 15	110 of 153	71.9%	49 of 409	12.0%
	2015/ 16 YTD	106 of 149	71.1%	44 of 418	10.5%
LATEST BENCHMARKING	SN AVE		67.6%		9.6%
	BEST SN		79.0%		7.0%
	NAT AVE		67.0%		11.0%
	NAT TOP QTILE		71.1%		9.0%

% long term LAC placements stable for at least 2 years



% LAC who have had 3 or more placements - rolling 12 months



LOOKED AFTER CHILDREN - REVIEWS & VISITS

DEFINITION

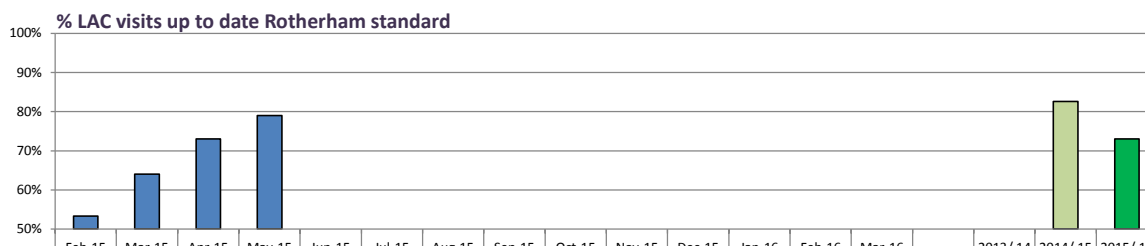
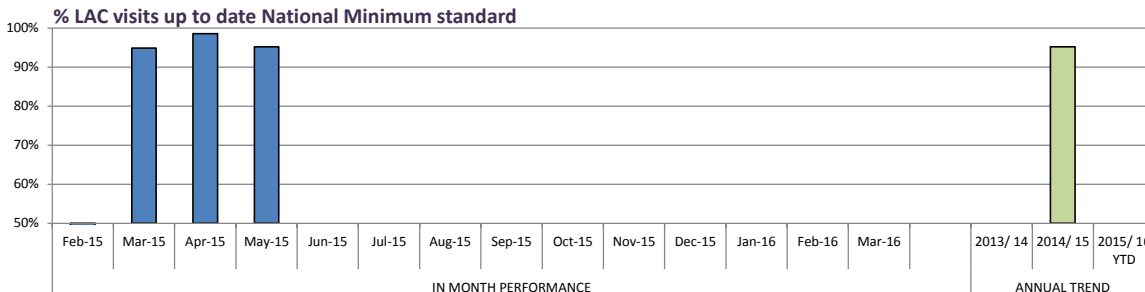
The purpose of LAC review meeting is to consider the plan for the welfare of the looked after child and achieve Permanence for them within a timescale that meets their needs. The review is chaired by an Independent Reviewing Officer(IRO)

PERFORMANCE ANALYSIS

With regard to LAC reviews the performance data indicates that there were 6 reviews out of timescale in May. Through validation and exploration of the files it is confirmed that 2 LAC reviews were held out of timescale during May. One was out of timescale by 1 day to support the Young Person attending the review. The second was due to poor time planning. A tracker of due dates is being completed to support Independent Reviewing Officer's to ensure meetings are planned and held in timescale. Of the 4 remaining cases 3 are data entry errors, the 4th was within timescale. The data on the records has been amended to reflect this.

In relation to visits to LAC these are monitored at the weekly performance meeting. Performance in relation to visits within the National minimum standards is good and any visit exceeding statutory minimum timescales is examined on a child by child basis to ensure they have been subsequently visited and to ensure the reason for lateness is understood. In addition to statutory minimum standard Rotherham has set a local standard that exceeds this performance in relation to this has increased but the progress is slower. More recently, given the increased focus, visits that are out of statutory minimum dates have been related to delayed recording of visits. Action has been taken where workers are regularly slow in recording on the system to address this as a performance or skills issue.

		No. LAC cases not reviewed in timescales	% of LAC cases reviewed within timescales	% LAC visits up to date National Minimum standard	% LAC visits up to date Rotherham standard
IN MONTH PERFORMANCE	Feb-15	0 of 68	100.0%	not reported	53.3%
	Mar-15	2 of 126	98.4%	94.9%	64.0%
	Apr-15	3 of 71	94.8%	98.6%	73.0%
	May-15	6 of 60	90.0%	95.2%	79.0%
	Jun-15				
	Jul-15				
	Aug-15				
	Sep-15				
	Oct-15				
	Nov-15				
	Dec-15				
	Jan-16				
	Feb-16				
	Mar-16				
ANNUAL TREND	2013/ 14		98.6%		
	2014/ 15	19 of 371	94.9%	95.2%	82.6%
	2015/ 16 YTD	10 of 134	92.5%		73.0%
LATEST BENCHMARKING	SN AVE				
	BEST SN				
	NAT AVE				
	NAT TOP Q TILE				



LOOKED AFTER CHILDREN - HEALTH

DEFINITION

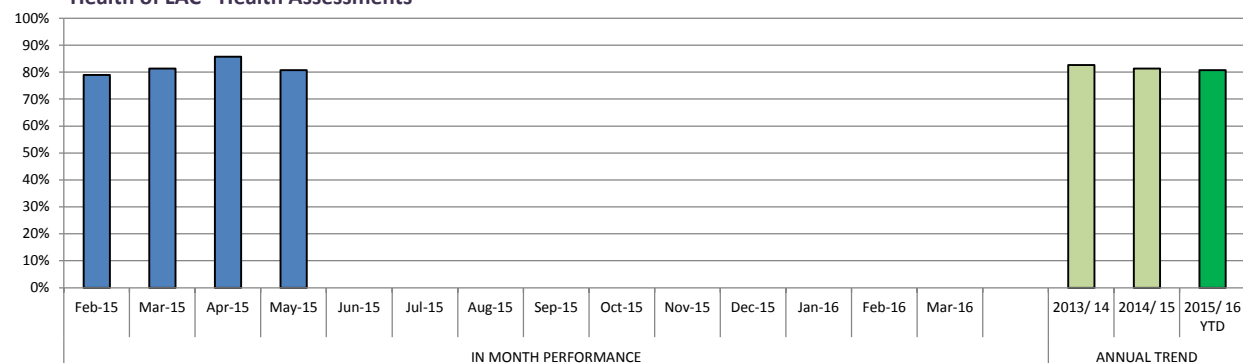
Local authorities have a duty to safeguard and to promote the welfare of the children they look after, therefore the local authority should make arrangements to ensure that every child who is looked after has his/her health needs fully assessed and a health plan clearly set out.

PERFORMANCE ANALYSIS

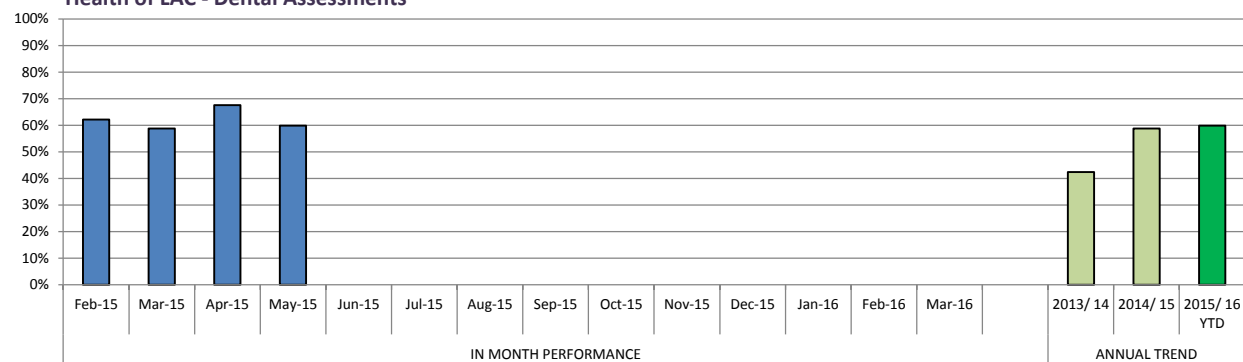
Performance in relation to health and dental assessments is poor, in particular Initial Health Assessments need to improve, and the frequency of dental assessments is not good enough. A task and finish group has been established to examine the causes of poor performance and to develop revised processes where required. One of the initial findings identified by the group is that the local dental practice of check ups being less than 6 monthly is having an adverse impact on performance, this is to be addressed through dental leads.

		Health of LAC - Health Assessments	Health of LAC - Dental Assessments
IN MONTH PERFORMANCE	Feb-15	79.0%	62.2%
	Mar-15	81.4%	58.8%
	Apr-15	85.7%	67.6%
	May-15	80.8%	59.9%
	Jun-15		
	Jul-15		
	Aug-15		
	Sep-15		
	Oct-15		
	Nov-15		
	Dec-15		
	Jan-16		
	Feb-16		
	Mar-16		
ANNUAL TREND	2013/ 14	82.7%	42.5%
	2014/ 15	81.4%	58.8%
	2015/ 16 YTD	80.8%	59.9%
LATEST BENCHMARKING	SN AVE		
	BEST SN		
	NAT AVE		
	NAT TOP QTILE		

Health of LAC - Health Assessments



Health of LAC - Dental Assessments



LOOKED AFTER CHILDREN - PERSONAL EDUCATION PLANS

DEFINITION

A personal education plan (PEP) is a school based meeting to plan for the education of a child in care. The government have made PEPs a statutory requirement for children in care to help track and promote their achievements.

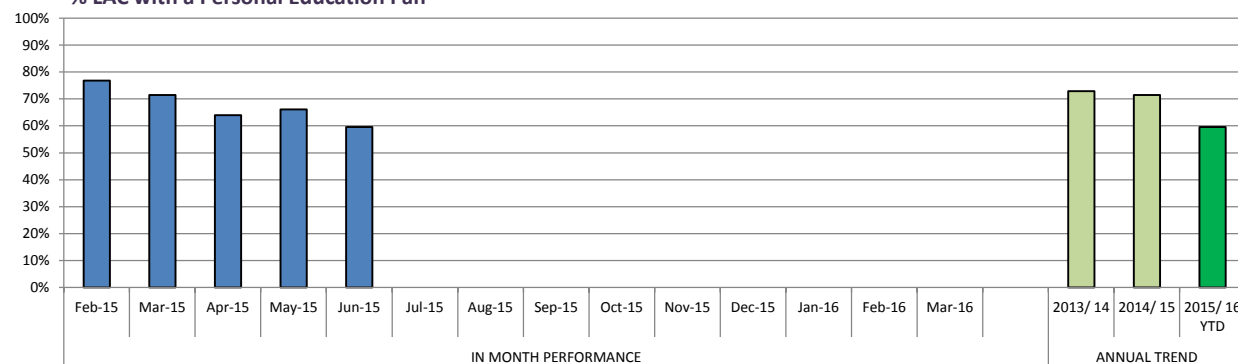
PERFORMANCE ANALYSIS

Previously education of Looked After Children was supported by The Get Real team this team ceased to exist from the 1st April 2015 and this has been replaced by a new Virtual School in line with National best practice guidance. Performance in PEP's has declined over the past 3 months which is of concern this is linked to the changes and adjustment to new systems. This will be addressed in performance meetings with the management team

The completion of the PEP is moving towards an E-PEP system to commence in September (start of Autumn term) which should lead to an improvement as PEPs' will be created directly on the system rather than relying on workers placing the PEP onto the ESCR system as a word document.

		% LAC with a Personal Education Pan
IN MONTH PERFORMANCE	Feb-15	76.8%
	Mar-15	71.4%
	Apr-15	64.0%
	May-15	66.1%
	Jun-15	59.6%
	Jul-15	
	Aug-15	
	Sep-15	
	Oct-15	
	Nov-15	
	Dec-15	
	Jan-16	
	Feb-16	
	Mar-16	
ANNUAL TREND	2013/ 14	72.9%
	2014/ 15	71.4%
	2015/ 16 YTD	59.6%
LATEST BENCHMARKING	SN AVE	
	BEST SN	
	NAT AVE	
	NAT TOP QTILE	

% LAC with a Personal Education Pan



ADOPTIONS

DEFINITION

Following a child becoming a LAC, it may be deemed suitable for a child to become adopted which is a legal process of becoming a non-biological parent.

PERFORMANCE ANALYSIS

2015/16 Data has been supplied by the service and remains unvalidated.

		% adoptions completed within 12 months of SHOBPA	Av. No. days between a child becoming LAC & having a adoption placement (A1)	Av. No. days between placement order & being matched with adoptive family (A2)
IN MONTH PERFORMANCE	Feb-15	66.7%	161.0	49.0
	Mar-15	100.0%	200.3	71.0
	Apr-15	100.0%	360.5	74.5
	May-15	50.0%	566	295.0
	Jun-15			
	Jul-15			
	Aug-15			
	Sep-15			
	Oct-15			
	Nov-15			
	Dec-15			
	Jan-16			
	Feb-16			
	Mar-16			
ANNUAL TREND	2013/ 14	55.6%	661.0	315.0
	2014/ 15	84.6%	417.5	177.3
	2015/ 16 YTD	75.0%	463.3	184.8
LATEST BENCHMARKING	SN AVE			
	BEST SN			
	NAT AVE			
	NAT TOP Q TILE			

